

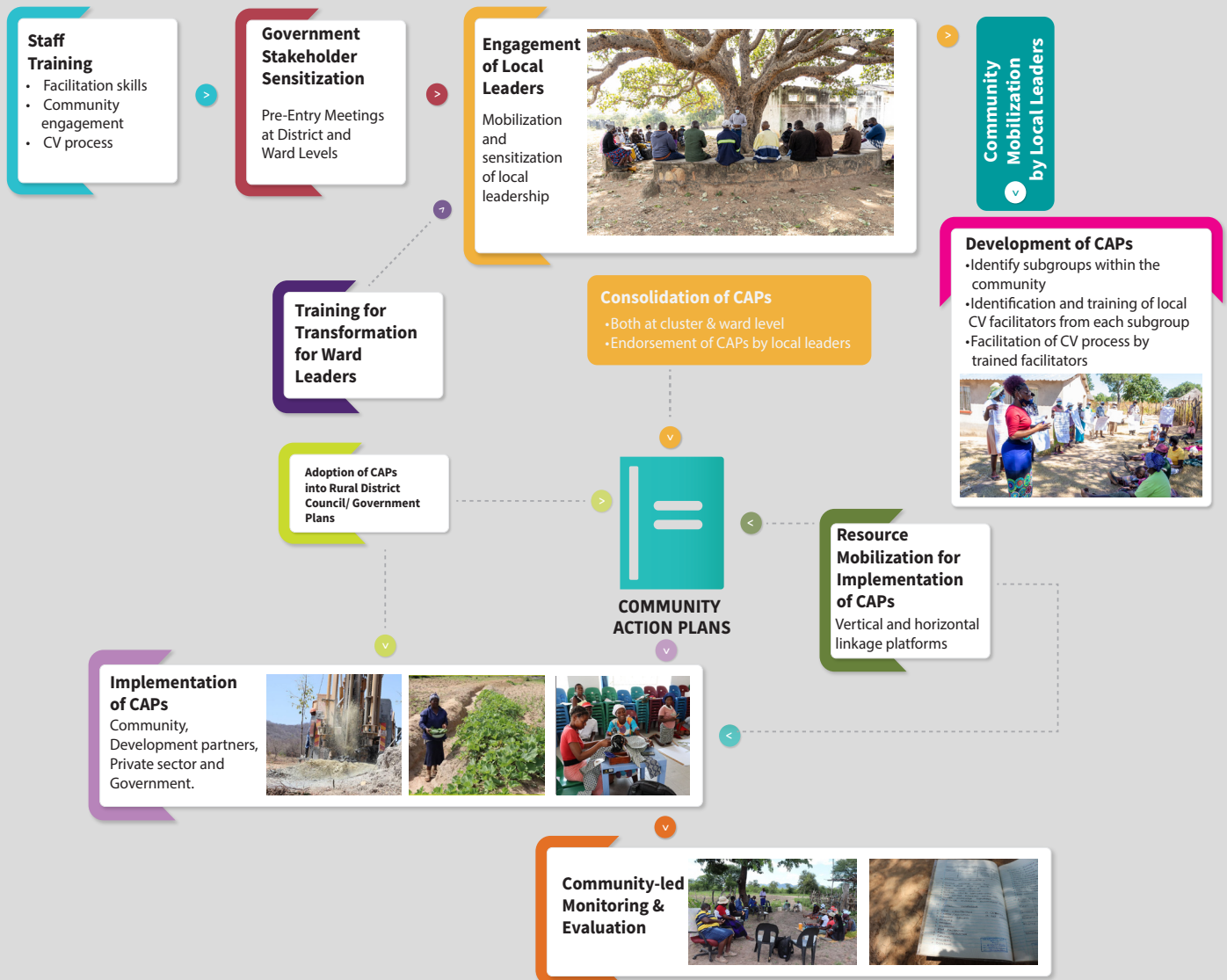


Sustainable, Equitable, and Resilient Food, Nutrition, and Income Security in Manicaland (Buhera and Mutare) and Masvingo (Chivi and Zaka).



COMMUNITY VISIONING

The flow diagram below illustrates the evolution of the CV process to date.



IMPLEMENTING PARTNERS



Contact: Walter Mwasaa | Chief of Party, Takunda | CARE Zimbabwe | Walter.Mwasaa@care.org | <https://linktr.ee/takundarfsa>